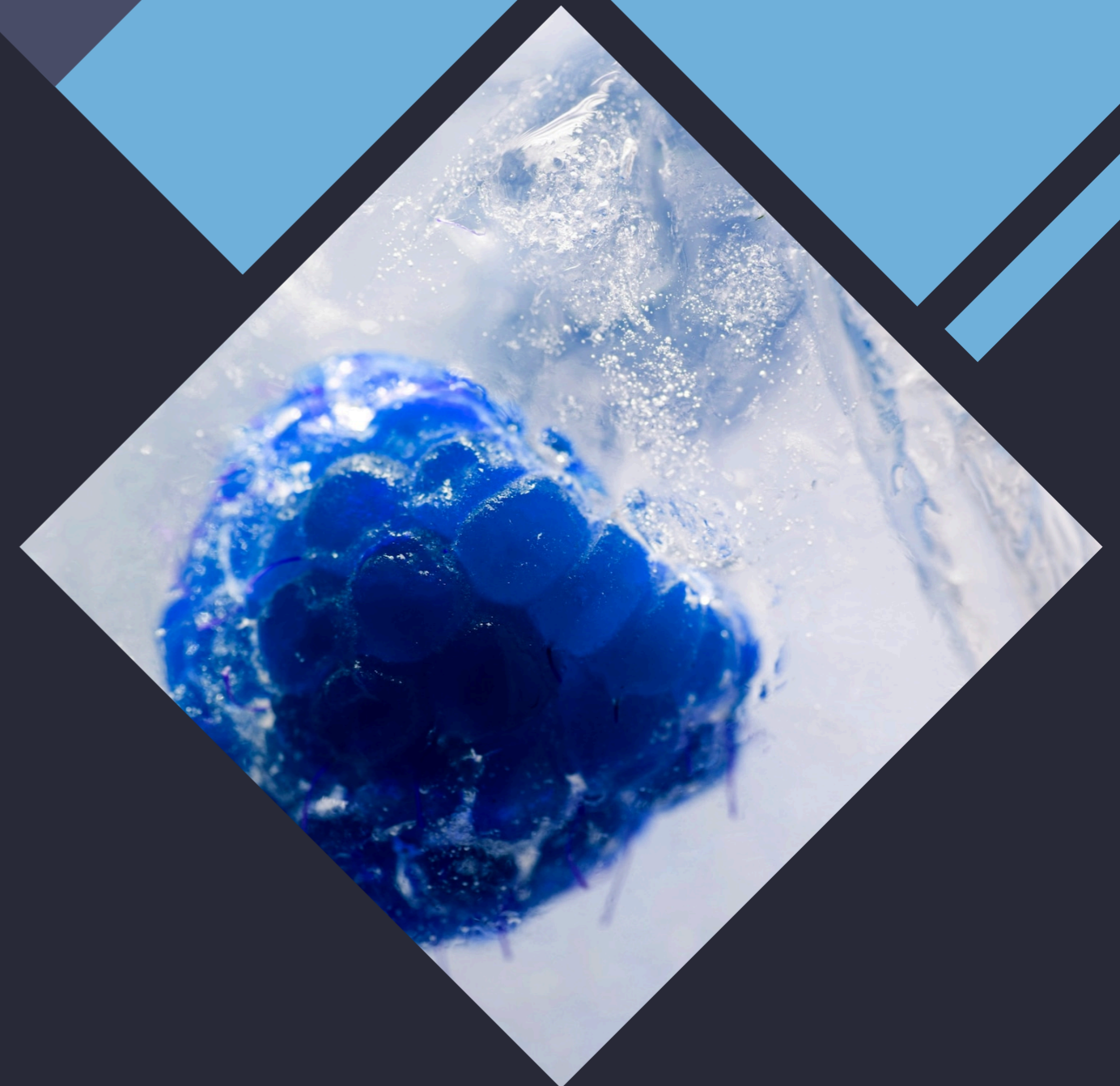


Unveiling the Silent Crisis: Understanding the Impacts and Solutions to Iceberg Melting



Introduction

The **melting of icebergs** is a critical issue with far-reaching consequences. This presentation aims to explore the **impacts** and potential **solutions** to this silent crisis.



Iceberg Melting: Causes

The **warming climate** and human activities are the primary contributors to iceberg melting. Increased temperatures and **ocean acidification** are accelerating the process.



Environmental Impacts

Iceberg melting leads to rising sea levels, loss of habitat for **polar animals**, and disruptions in ocean currents. These changes have profound effects on global ecosystems.





Economic Ramifications

The loss of icebergs affects **fishing industries**, coastal communities, and tourism. Additionally, it amplifies the risks of extreme weather events and natural disasters.

The image features a dark blue background with large, overlapping geometric shapes in shades of blue and grey. On the left side, there are two photographs. The top one shows a woman in a dark swimsuit swimming in the ocean with her arms outstretched. The bottom one shows two women standing on a rocky shore, holding hands and looking out at the water. The text 'Social Consequences' is written in a large, white, serif font on the right side of the image.

Social Consequences

The displacement of communities, loss of livelihoods, and potential conflicts over resources are among the social challenges posed by iceberg melting.

Technological Innovations

Advanced **satellite monitoring**, predictive modeling, and innovative engineering solutions offer hope in mitigating the impacts of iceberg melting.



Policy Interventions

International cooperation, stringent **emission regulations**, and sustainable resource management are crucial in combating iceberg melting and its consequences.



Community Engagement

Local initiatives, community education, and public awareness campaigns play a vital role in mobilizing efforts to address iceberg melting and its effects.





Future Prospects

The road ahead involves collective action, innovative solutions, and a renewed commitment to safeguarding the planet's icy realms for future generations.

Conclusion

Iceberg melting is a complex challenge with profound implications. By understanding its impacts and embracing sustainable solutions, we can strive towards a more resilient and harmonious future.

Thanks!

Do you have any
questions?

Made by: Matija Kraljević

